

Stainless Steel-Ball lock pins

AISI 303, with plastic-knob

SPECIFICATION

Pin Stainless Steel AISI 303

Knob

Plastic (Polyamide PA)

- black-grey / red
- temperature resistant up to 80 °C

Balls

Stainless Steel AISI 420C

Spring

German Material No. 1.4565



INFORMATION

Stainless Steel-Ball lock pins GN 113.5 are used for quick fixing, connecting and locking of various parts and workpieces. A typical application is locating pins which have often to be removed and installed again.

By pressing the spring loaded push button both balls are unlocked and by releasing it, the balls are locked again.

The load values given in the above table at shear stress are theoretically obtained and indicative only. They are non-binding recommended values and rule out any liability. They constitute no general warranty of quality and condition. The user must determine from case to case whether a product is suitable for the intended use.

- Range of lock pins (see page 868)

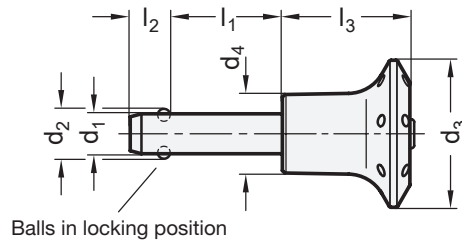
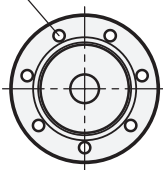
ACCESSORY

- Ball chains GN 111 (see page 904)
- Stainless Steel-Ball chains GN 111.5 (see page 905)
- Retaining cables GN 111.2 (see page 906)
- Spiral retaining cables GN 111.4 (see page 908)

TECHNICAL INFORMATION

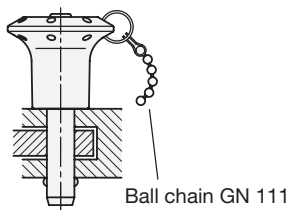
- ISO-Fundamental Tolerances (see page A21)
- Stainless Steel characteristics (see page A26)

Bore for key ring
(ball chain)

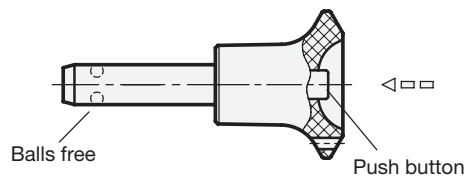


Balls in locking position

Application example



Ball chain GN 111



Balls free

Push button

GN 113.5

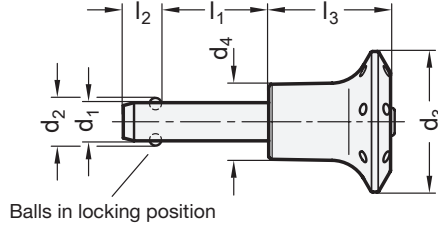
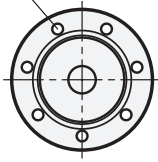
STAINLESS STEEL

Description	d1 -0.04/-0.08	l1 +0.6	d2	d3	d4	l2 ±1	l3 -0.2	Locating bore H11	Load in kN ≈ Double sided shearing resistance according DIN 50141 (Breaking strength)	⚖
GN 113.5-5-10	5	10	5.5	30	16	6	26	5	14	17
GN 113.5-5-15	5	15	5.5	30	16	6	26	5	14	18
GN 113.5-5-20	5	20	5.5	30	16	6	26	5	14	19
GN 113.5-5-25	5	25	5.5	30	16	6	26	5	14	20
GN 113.5-5-30	5	30	5.5	30	16	6	26	5	14	22
GN 113.5-5-35	5	35	5.5	30	16	6	26	5	14	23
GN 113.5-5-40	5	40	5.5	30	16	6	26	5	14	25
GN 113.5-5-45	5	45	5.5	30	16	6	26	5	14	27
GN 113.5-5-50	5	50	5.5	30	16	6	26	5	14	29
GN 113.5-5-60	5	60	5.5	30	16	6	26	5	14	30
GN 113.5-5-70	5	70	5.5	30	16	6	26	5	14	31
GN 113.5-5-80	5	80	5.5	30	16	6	26	5	14	32
GN 113.5-6-10	6	10	7	30	16	7.1	26	6	21	18
GN 113.5-6-15	6	15	7	30	16	7.1	26	6	21	19
GN 113.5-6-20	6	20	7	30	16	7.1	26	6	21	20
GN 113.5-6-25	6	25	7	30	16	7.1	26	6	21	21
GN 113.5-6-30	6	30	7	30	16	7.1	26	6	21	23
GN 113.5-6-35	6	35	7	30	16	7.1	26	6	21	25
GN 113.5-6-40	6	40	7	30	16	7.1	26	6	21	26
GN 113.5-6-45	6	45	7	30	16	7.1	26	6	21	28
GN 113.5-6-50	6	50	7	30	16	7.1	26	6	21	30
GN 113.5-6-60	6	60	7	30	16	7.1	26	6	21	32
GN 113.5-6-70	6	70	7	30	16	7.1	26	6	21	33
GN 113.5-6-80	6	80	7	30	16	7.1	26	6	21	35
GN 113.5-8-10	6	10	9.3	33	17	8.0	32.3	6	38	37
GN 113.5-8-15	7	15	9.4	34	18	8.1	32.4	7	38	39
GN 113.5-8-20	8	20	9.5	35	19	8.2	32.5	8	38	42
GN 113.5-8-25	8	25	9.5	35	19	8.2	32.5	8	38	44
GN 113.5-8-30	8	30	9.5	35	19	8.2	32.5	8	38	46
GN 113.5-8-35	8	35	9.5	35	19	8.2	32.5	8	38	48
GN 113.5-8-40	8	40	9.5	35	19	8.2	32.5	8	38	51
GN 113.5-8-45	8	45	9.5	35	19	8.2	32.5	8	38	55
GN 113.5-8-50	8	50	9.5	35	19	8.2	32.5	8	38	57
GN 113.5-8-60	8	60	9.5	35	19	8.2	32.5	8	38	60
GN 113.5-8-70	8	70	9.5	35	19	8.2	32.5	8	38	62
GN 113.5-8-80	8	80	9.5	35	19	8.2	32.5	8	38	65
GN 113.5-8-90	8	90	9.5	35	19	8.2	32.5	8	38	69
GN 113.5-8-100	8	100	9.5	35	19	8.2	32.5	8	38	73
GN 113.5-10-15	10	15	12	35	19	9.6	32.5	10	60	45
GN 113.5-10-20	10	20	12	35	19	9.6	32.5	10	60	49
GN 113.5-10-25	10	25	12	35	19	9.6	32.5	10	60	52
GN 113.5-10-30	10	30	12	35	19	9.6	32.5	10	60	55
GN 113.5-10-35	10	35	12	35	19	9.6	32.5	10	60	58
GN 113.5-10-40	10	40	12	35	19	9.6	32.5	10	60	62
GN 113.5-10-45	10	45	12	35	19	9.6	32.5	10	60	64
GN 113.5-10-50	10	50	12	35	19	9.6	32.5	10	60	68
GN 113.5-10-60	10	60	12	35	19	9.6	32.5	10	60	73
GN 113.5-10-70	10	70	12	35	19	9.6	32.5	10	60	75
GN 113.5-10-80	10	80	12	35	19	9.6	32.5	10	60	77
GN 113.5-10-90	10	90	12	35	19	9.6	32.5	10	60	80
GN 113.5-10-100	10	100	12	35	19	9.6	32.5	10	60	84
GN 113.5-10-110	10	110	12	35	19	9.6	32.5	10	60	86
GN 113.5-10-120	10	120	12	35	19	9.6	32.5	10	60	88



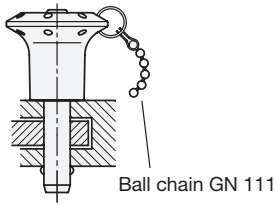
Indexing elements

Bore for key ring
(ball chain)

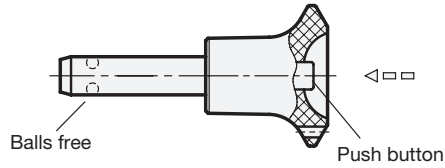


Balls in locking position

Application example



Ball chain GN 111



Balls free

Push button

GN 113.5

STAINLESS STEEL

Description	d1 -0.04/-0.08	l1 +0.6	d2	d3	d4	l2 ±1	l3 -0.2	Locating bore H11	Load in kN ≈ Double sided shearing resistance according DIN 50141 (Breaking strength)	⚖
GN 113.5-12-20	12	20	14.5	42	25	10.6	39	12	87	90
GN 113.5-12-25	12	25	14.5	42	25	10.6	39	12	87	100
GN 113.5-12-30	12	30	14.5	42	25	10.6	39	12	87	104
GN 113.5-12-35	12	35	14.5	42	25	10.6	39	12	87	108
GN 113.5-12-40	12	40	14.5	42	25	10.6	39	12	87	113
GN 113.5-12-45	12	45	14.5	42	25	10.6	39	12	87	117
GN 113.5-12-50	12	50	14.5	42	25	10.6	39	12	87	121
GN 113.5-12-60	12	60	14.5	42	25	10.6	39	12	87	123
GN 113.5-12-70	12	70	14.5	42	25	10.6	39	12	87	138
GN 113.5-12-80	12	80	14.5	42	25	10.6	39	12	87	148
GN 113.5-12-90	12	90	14.5	42	25	10.6	39	12	87	154
GN 113.5-12-100	12	100	14.5	42	25	10.6	39	12	87	159
GN 113.5-12-110	12	110	14.5	42	25	10.6	39	12	87	162
GN 113.5-12-120	12	120	14.5	42	25	10.6	39	12	87	169
GN 113.5-16-30	16	30	19	42	25	14	39	16	155	126
GN 113.5-16-35	16	35	19	42	25	14	39	16	155	130
GN 113.5-16-40	16	40	19	42	25	14	39	16	155	151
GN 113.5-16-45	16	45	19	42	25	14	39	16	155	158
GN 113.5-16-50	16	50	19	42	25	14	39	16	155	167
GN 113.5-16-60	16	60	19	42	25	14	39	16	155	183
GN 113.5-16-70	16	70	19	42	25	14	39	16	155	198
GN 113.5-16-80	16	80	19	42	25	14	39	16	155	213
GN 113.5-16-90	16	90	19	42	25	14	39	16	155	215
GN 113.5-16-100	16	100	19	42	25	14	39	16	155	220
GN 113.5-16-110	16	110	19	42	25	14	39	16	155	226
GN 113.5-16-120	16	120	19	42	25	14	39	16	155	230
GN 113.5-16-130	16	130	19	42	25	14	39	16	155	242
GN 113.5-16-140	16	140	19	42	25	14	39	16	155	250
GN 113.5-16-150	16	150	19	42	25	14	39	16	155	262

Indexing elements